

Windows Server 2003 R2 Enterprise Edition

Registro gratuito para receber um serial *trial* (pode ser ativado em até 3 instalações e é válido por até 180 dias):

<http://technet.microsoft.com/pt-br/windowsserver/bb430831.aspx>

Download do ISO da versão 32 bits:

<http://www.microsoft.com/windowsserver2003/R2/trial/installinstruct.mspix>

Download do ISO da versão 64 bits:

<http://www.microsoft.com/windowsserver2003/R2/trial/installinstructx64.mspix>

Download de imagem pré-instalada (formato Virtual Server, mas pode ser aberto no Vmware Workstation):

<http://www.microsoft.com/downloads/details.aspx?FamilyID=77f24c9d-b4b8-4f73-99e3-c66f80e415b6&displaylang=en>

Laboratórios virtuais remotos:

[http://technet.microsoft.com/pt-br/bb539981\(en-us\).aspx](http://technet.microsoft.com/pt-br/bb539981(en-us).aspx)

Referências:

http://www.petri.co.il/install_windows_2003.htm

<http://www.microsoft.com/brasil/servidores/windowsserver2003/default.mspix>

Procedimento de instalação:

A screenshot of a black terminal window with white text. The text reads "Setup is inspecting your computer's hardware configuration...". The rest of the screen is black and empty.

Setup is inspecting your computer's hardware configuration...

Tela exibida logo após o *boot* do CD de instalação.

Windows Setup

Press F6 if you need to install a third party SCSI or RAID driver...

Pressione "F6" somente se possuir uma controladora de disco (SCSI, RAID ou SATA) para o qual o Windows não tenha um *driver* incluso. Nesse caso, será solicitado um disquete que contenha esse *driver*.

Windows Setup

Press F2 to run Automated System Recovery (ASR)...

Pressione "F2" somente se desejar criar um disco de recuperação que pode ser utilizado em caso de falha.

Windows Setup

Setup is loading files (Windows Executive)...

Aguarde enquanto são carregados os arquivos necessários à instalação, incluindo *drivers* de dispositivo.

Windows Server 2003, Enterprise Edition Setup

Setup Notification:

You are about to install an evaluation version of Microsoft(R)
Windows(R) operating system which contains a time limited expiration
for evaluation purposes only.

- To continue, press ENTER.
- To quit Setup without installing Windows, press F3.

ENTER=Continue F3=Quit

Pressione "Enter" para continuar a instalação.

Windows Server 2003, Enterprise Edition Setup

Welcome to Setup.

This portion of the Setup program prepares Microsoft(R) Windows(R) to run on your computer.

- To set up Windows now, press ENTER.
- To repair a Windows installation using Recovery Console, press R.
- To quit Setup without installing Windows, press F3.

ENTER=Continue R=Repair F3=Quit

Pressione "Enter" para iniciar a configuração.

Windows Licensing Agreement

MICROSOFT EVALUATION SOFTWARE LICENSE TERMS

MICROSOFT WINDOWS SERVER 2003 R2 STANDARD EDITION, ENTERPRISE EDITION, STANDARD x64 EDITION, ENTERPRISE x64 EDITION WITH SERVICE PACK 2

These license terms are an agreement between Microsoft Corporation (or based on where you live, one of its affiliates) and you. Please read them. They apply to the evaluation software named above, which includes the media on which you received it, if any. The terms also apply to any Microsoft

- updates,
- supplements,
- Internet-based services, and
- support services

for this software, unless other terms accompany those items. If so, those terms apply.

F8=I agree ESC=I do not agree PAGE DOWN=Next Page

Leia a licença de uso e pressione "F8" para continuar.

Windows Server 2003, Enterprise Edition Setup

The following list shows the existing partitions and unpartitioned space on this computer.

Use the UP and DOWN ARROW keys to select an item in the list.

- To set up Windows on the selected item, press ENTER.
- To create a partition in the unpartitioned space, press C.
- To delete the selected partition, press D.

10237 MB Disk 0 at Id 0 on bus 0 on symmpi [MBR]

Unpartitioned space	10237 MB
---------------------	----------

ENTER=Install C=Create Partition F3=Quit

Pressione "Enter" para criar uma única partição para o sistema (ou "C" para customizar o particionamento).

Windows Server 2003, Enterprise Edition Setup

The partition you selected is not formatted. Setup will now format the partition.

Use the UP and DOWN ARROW keys to select the file system you want, and then press ENTER.

If you want to select a different partition for Windows, press ESC.

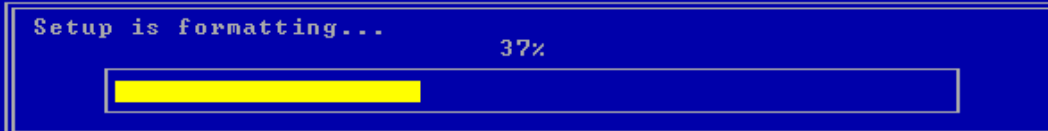
Format the partition using the NTFS file system <Quick>
Format the partition using the FAT file system <Quick>
Format the partition using the NTFS file system
Format the partition using the FAT file system

ENTER=Continue ESC=Cancel

Escolha o formato NTFS e pressione "Enter".

Windows Server 2003, Enterprise Edition Setup

Please wait while Setup formats the partition
C: Partition1 [New <Raw>] 10229 MB < 10228 MB free>
on 10237 MB Disk 0 at Id 0 on bus 0 on symmpi [MBR].



Aguarde enquanto a partição é formatada.

Windows Server 2003, Enterprise Edition Setup

Creating list of files to be copied...

Aguarde enquanto é gerada a lista dos arquivos de instalação.

Windows Server 2003, Enterprise Edition Setup

Please wait while Setup copies files
to the Windows installation folders.
This might take several minutes to complete.

Setup is copying files... 2%



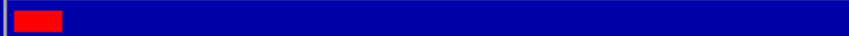
| Copying: kernel32.dll

Aguarde enquanto os arquivos de instalação são copiados para o disco.

Windows Server 2003, Enterprise Edition Setup

This portion of Setup has completed successfully.
If there is a floppy disk in drive A:, remove it.
To restart your computer, press ENTER.
When your computer restarts, Setup will continue.

Your computer will reboot in 14 seconds...



ENTER=Restart Computer

Pressione "Enter" para reiniciar o computador.



Copyright © Microsoft Corporation

Microsoft

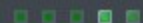
Tela exibida no *boot* da continuação do processo de instalação.



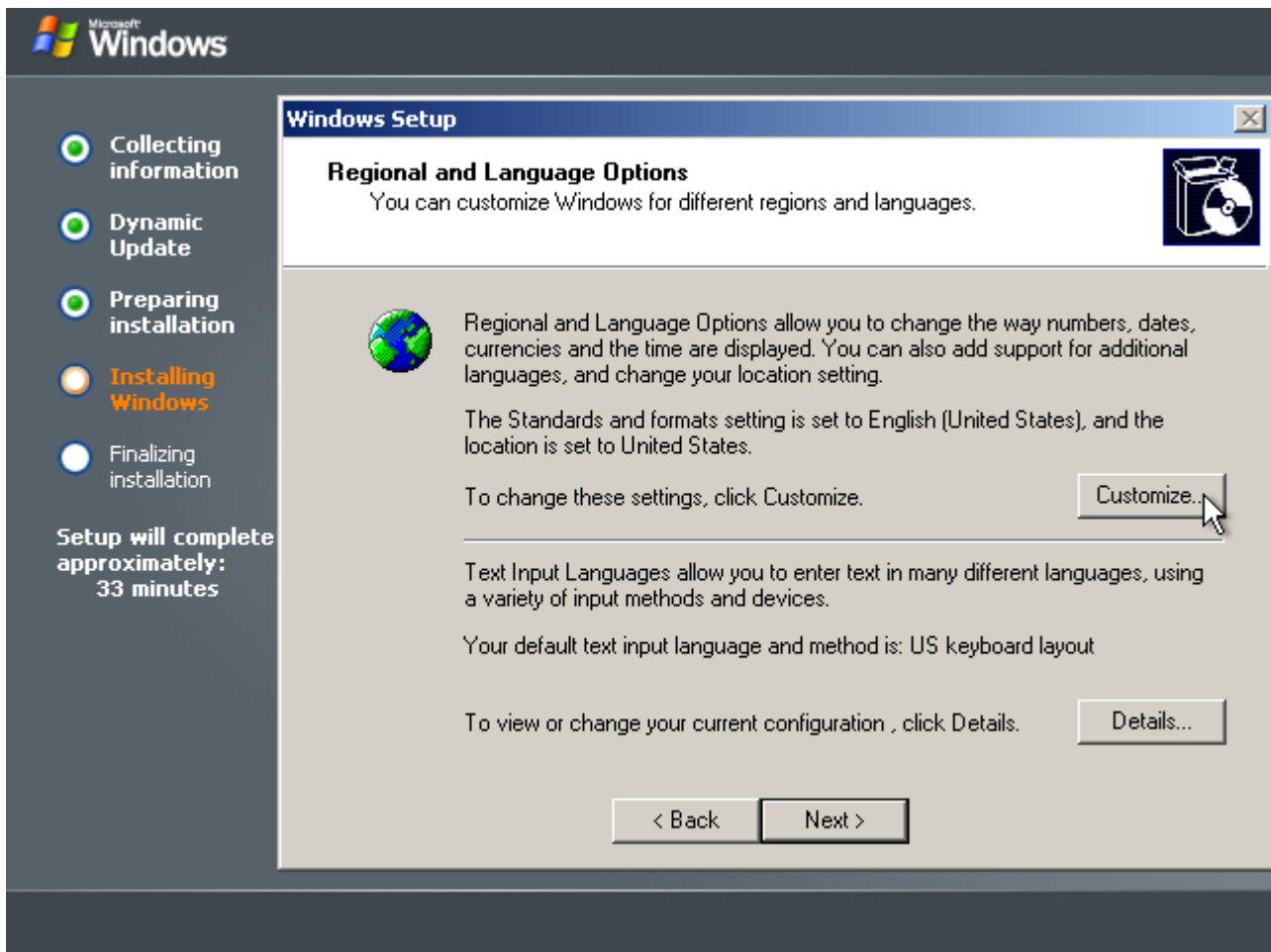
- Collecting information
- Dynamic Update
- Preparing installation
- Installing Windows**
- Finalizing installation

Setup will complete in approximately:
39 minutes

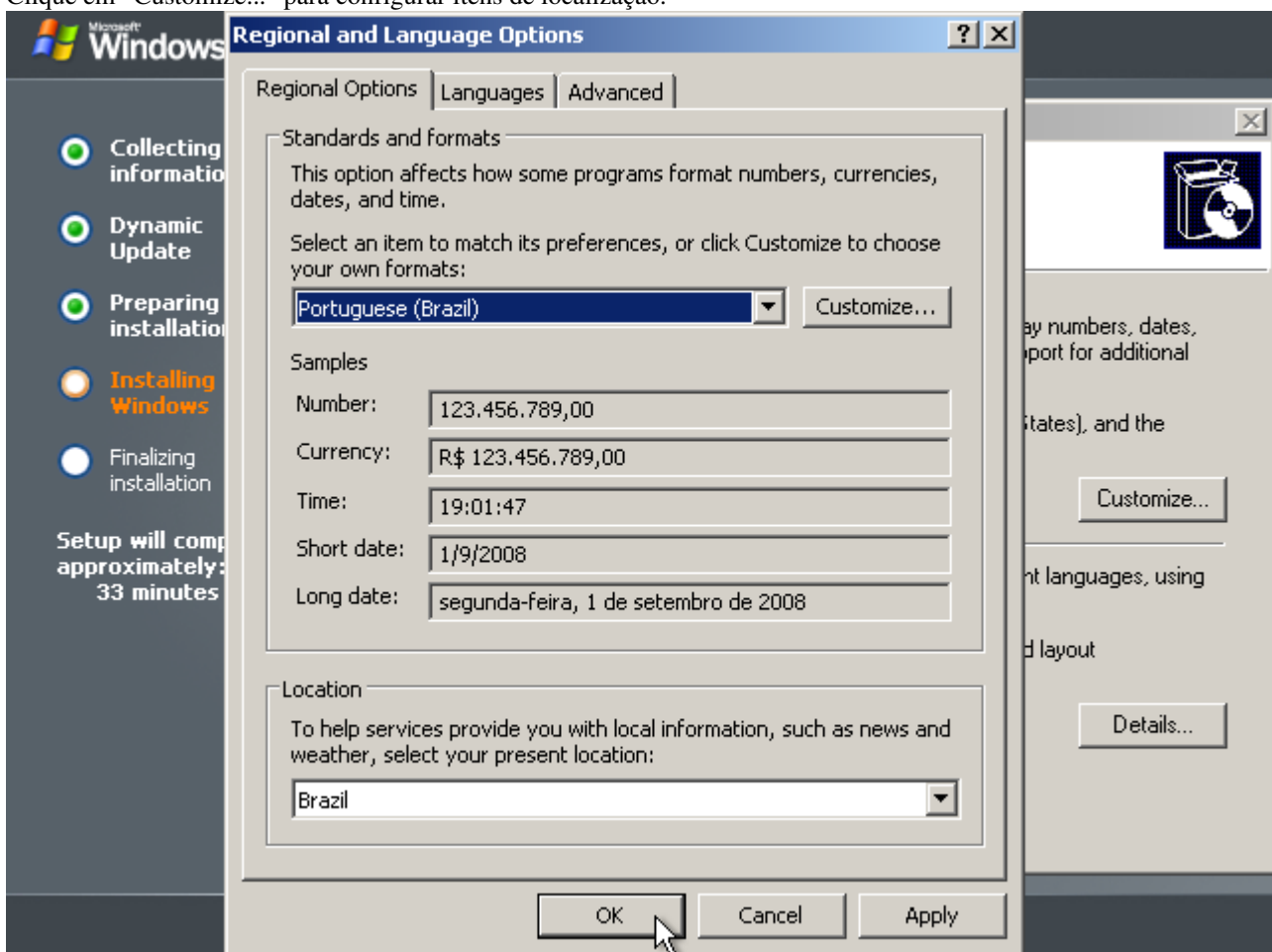
The Windows Server 2003 family provides the most productive infrastructure platform for powering networks, applications, and Web services



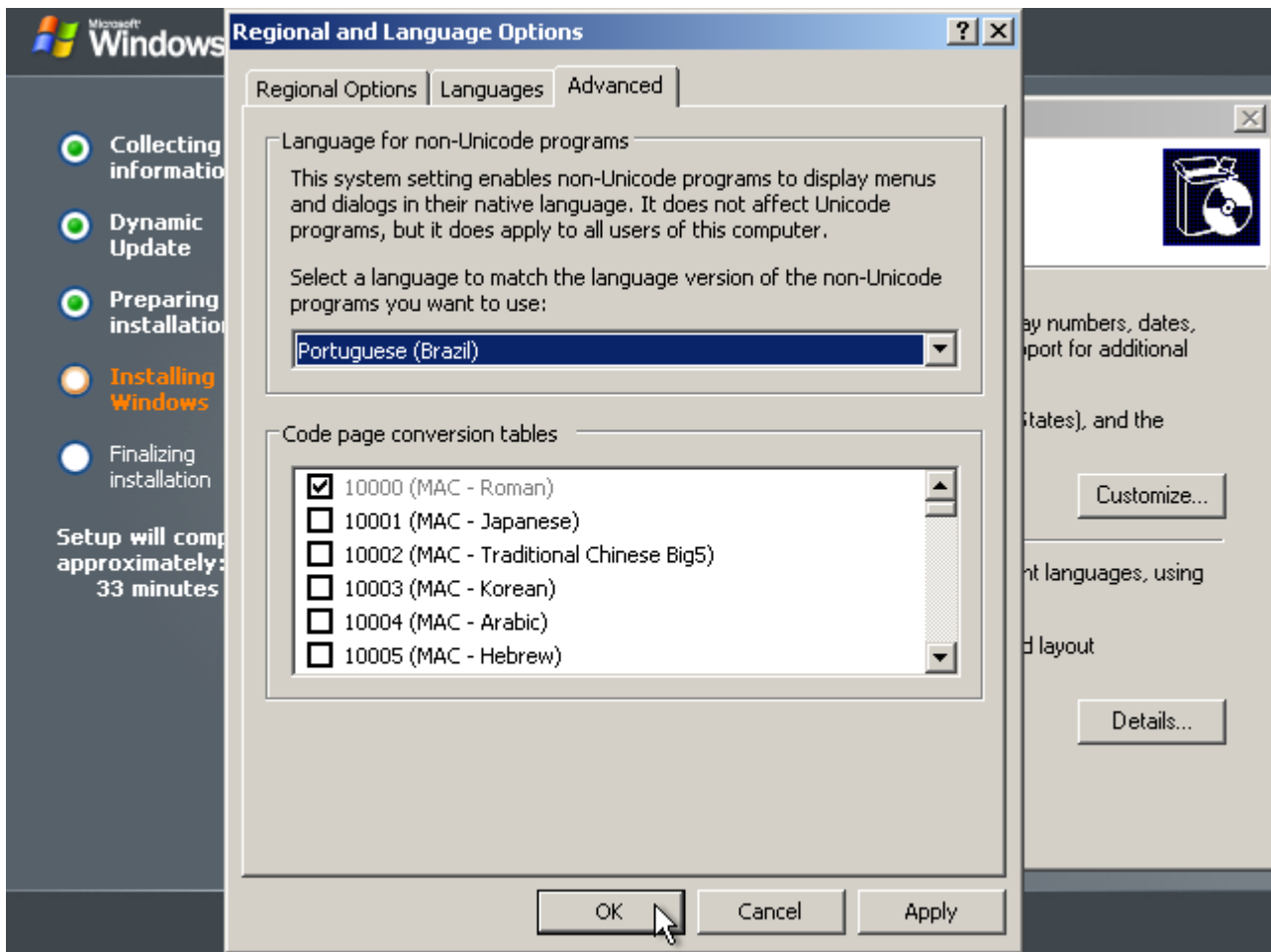
Aguarde enquanto a segunda parte do processo de instalação inicia.



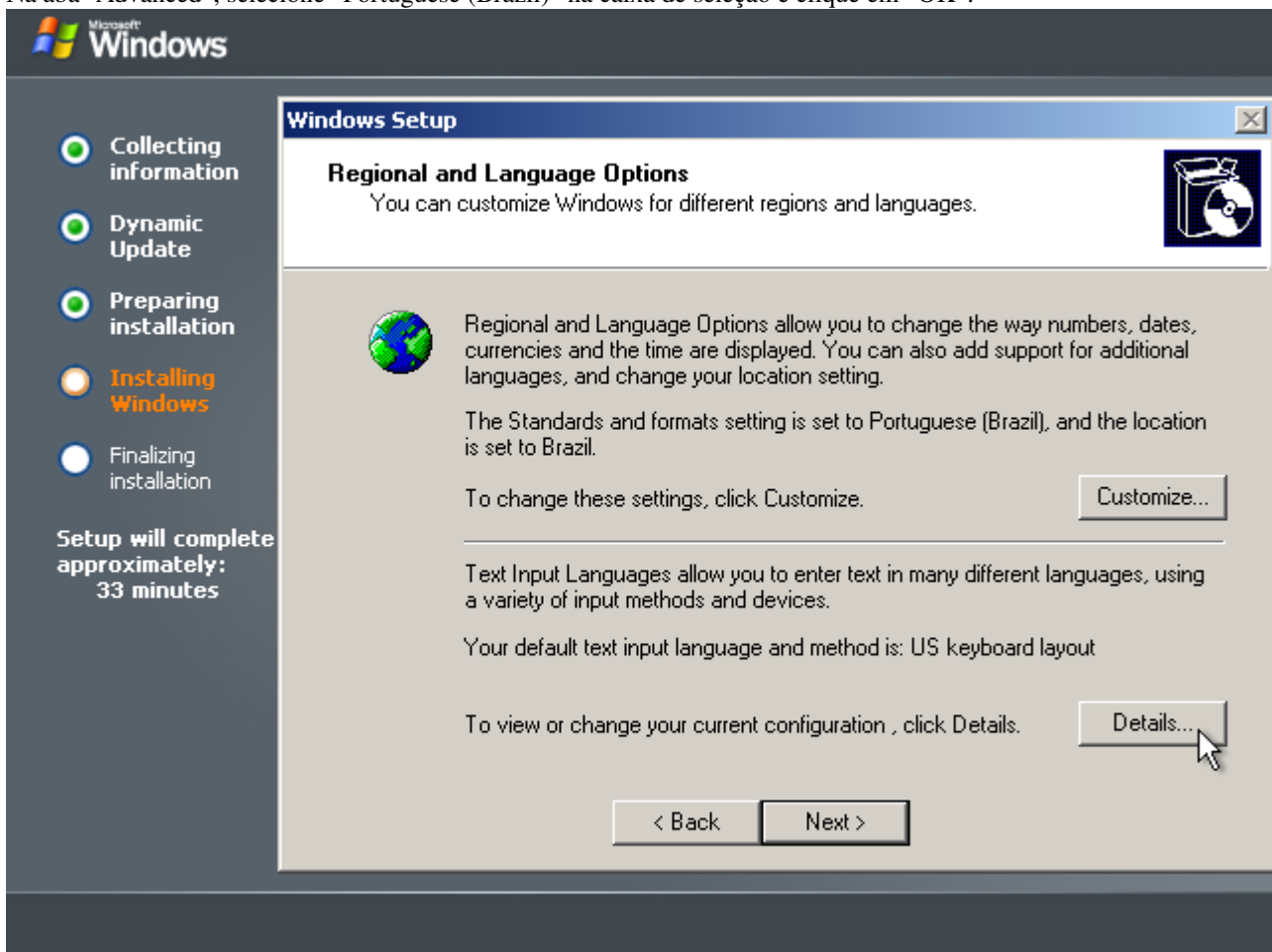
Clique em “Customize...” para configurar itens de localização.



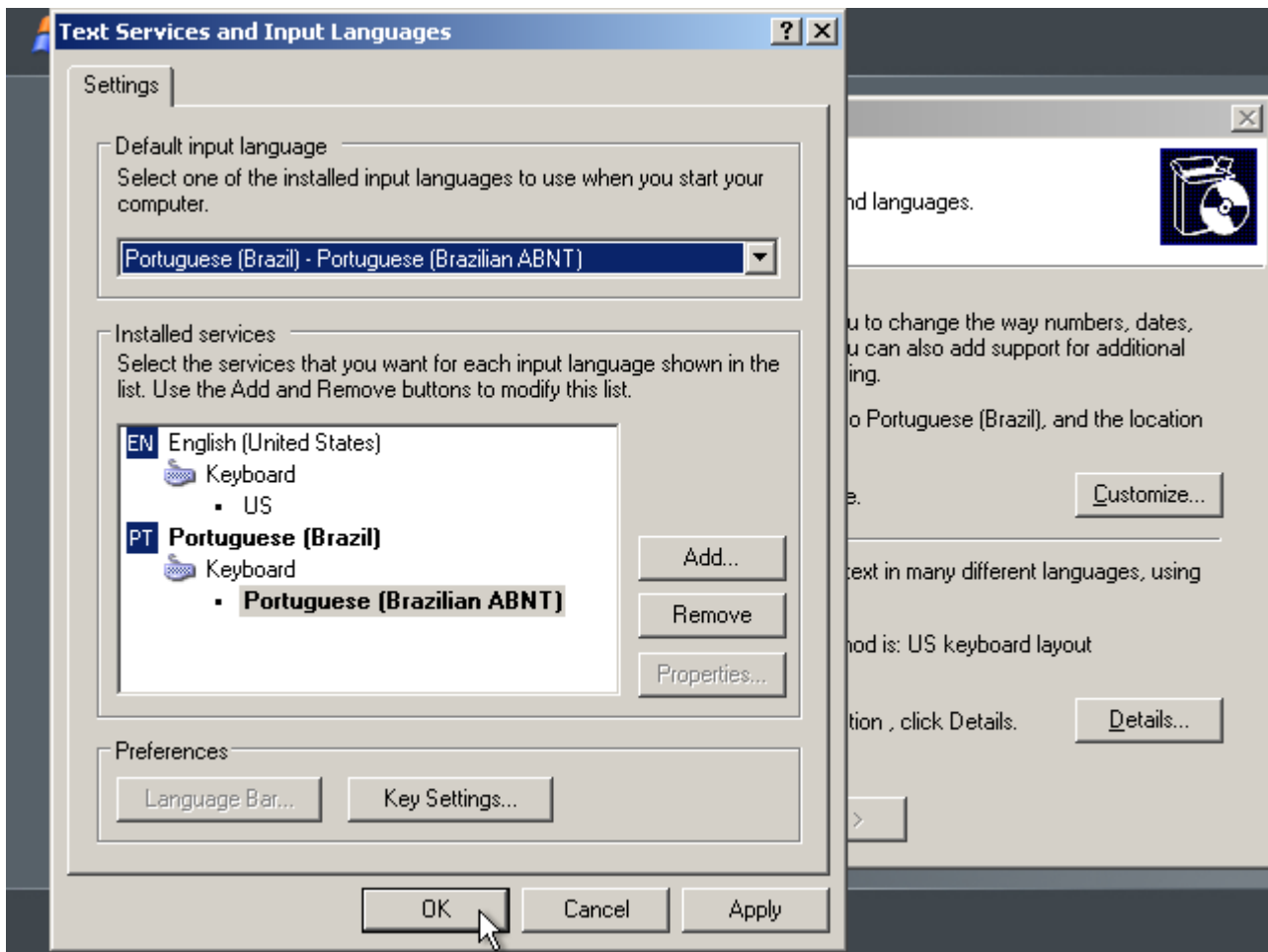
Selecione “Portuguese (Brazil)” e “Brazil” nas duas caixas de seleção.



Na aba "Advanced", selecione "Portuguese (Brazil)" na caixa de seleção e clique em "OK".

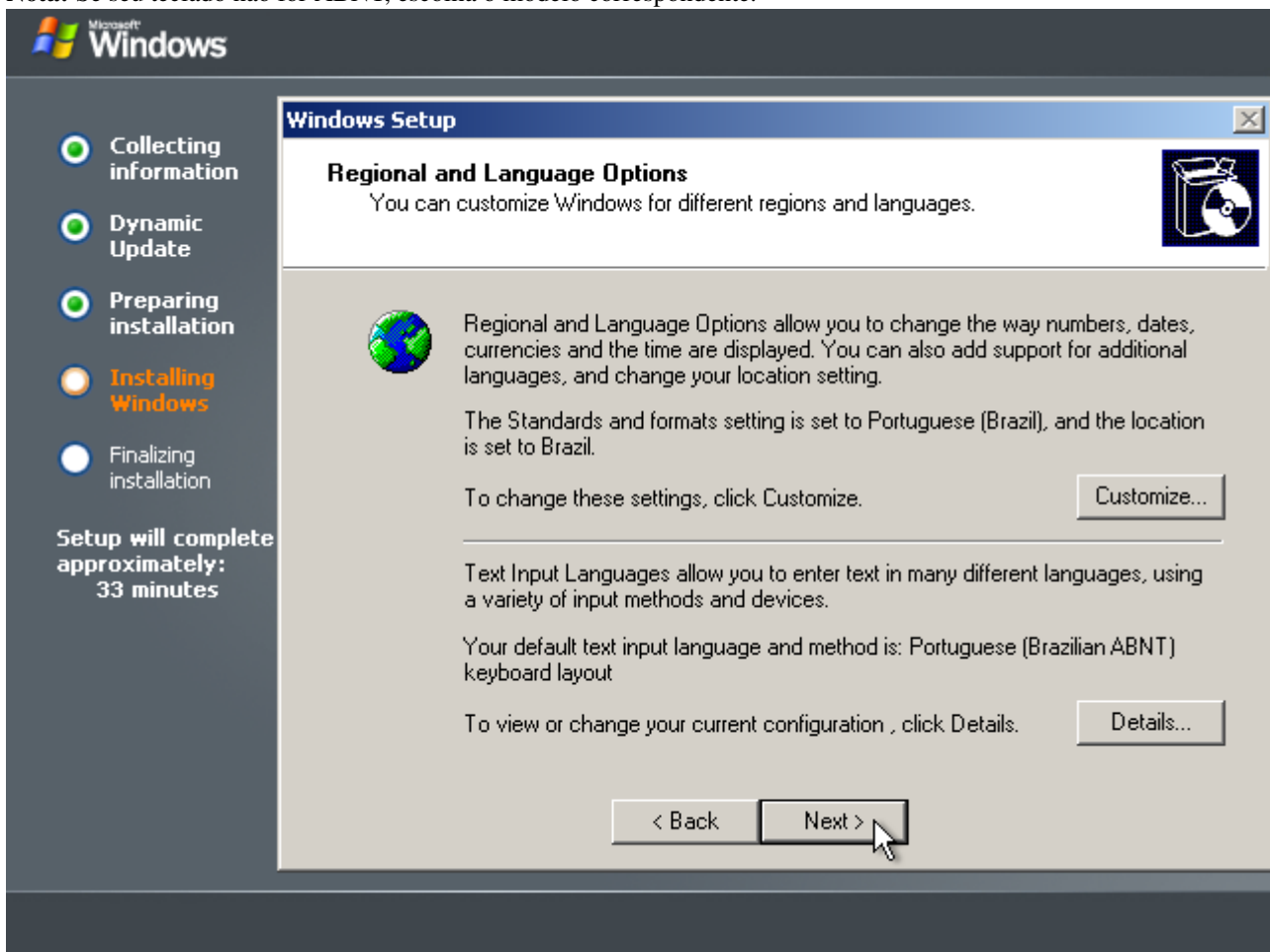


Clique em "Details...".

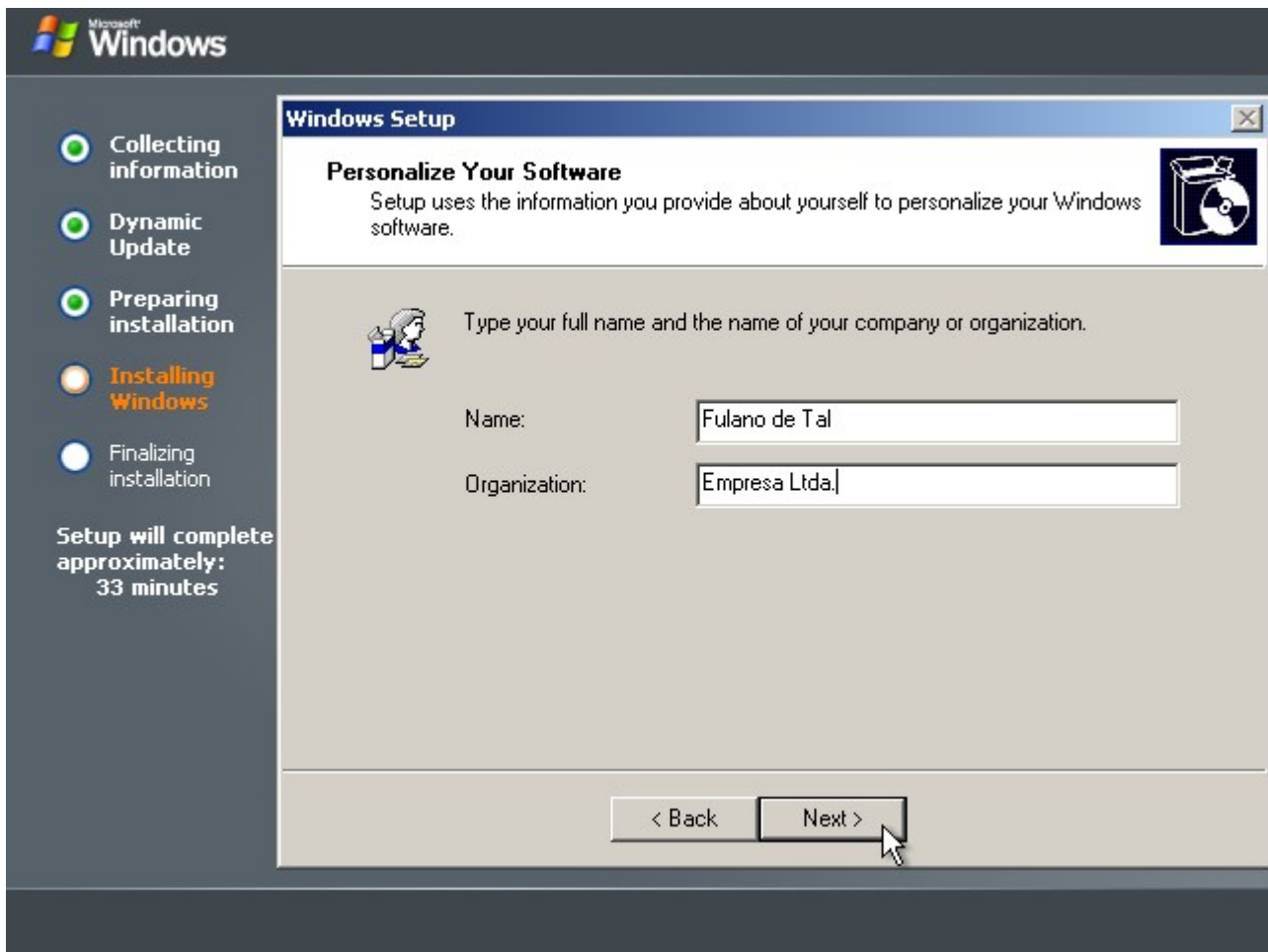


Selecione “Portuguese (Brazilian ABNT)” na caixa de seleção e clique em “OK”.

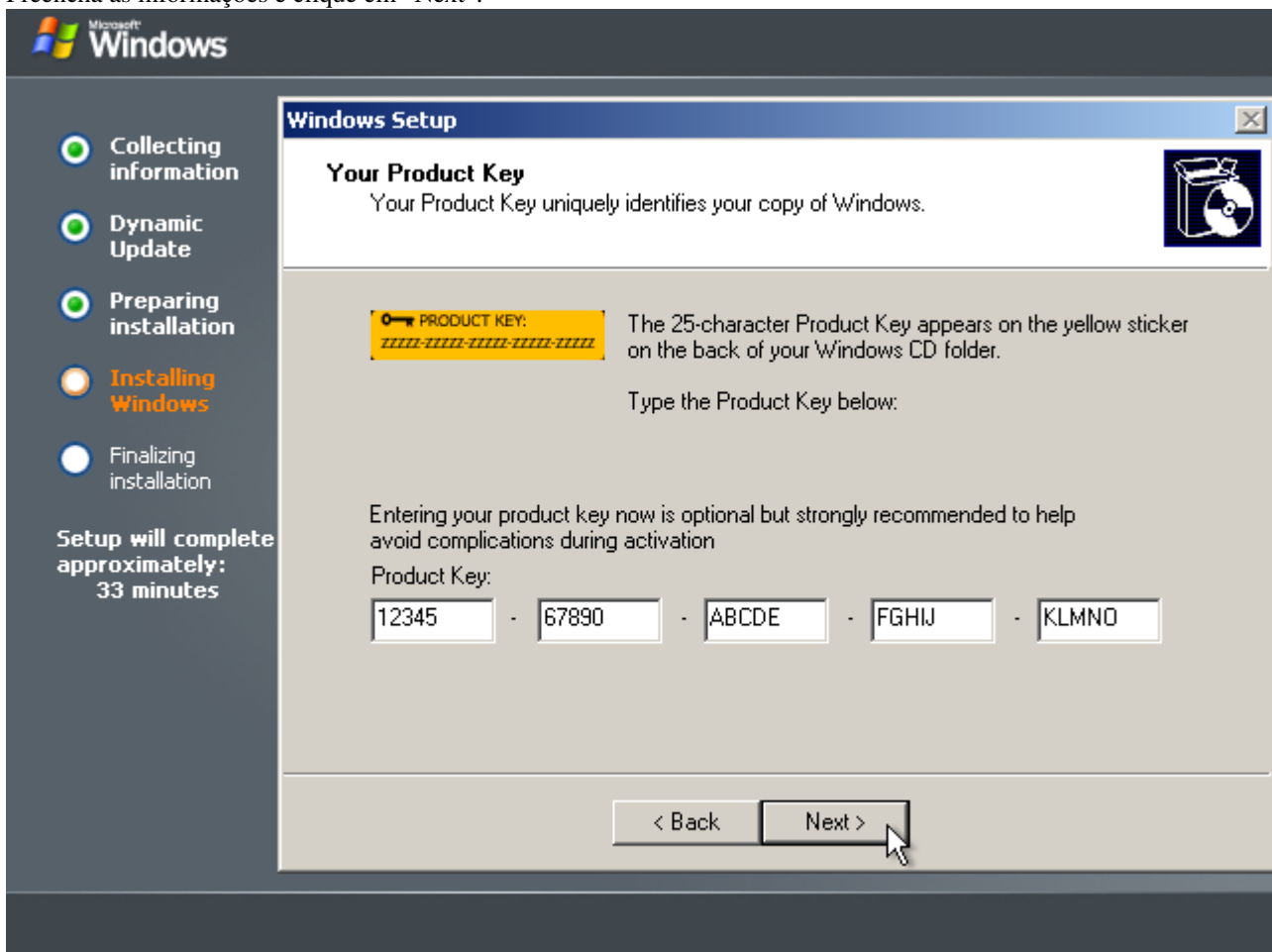
Nota: Se seu teclado não for ABNT, escolha o modelo correspondente.



Clique em “Next”.

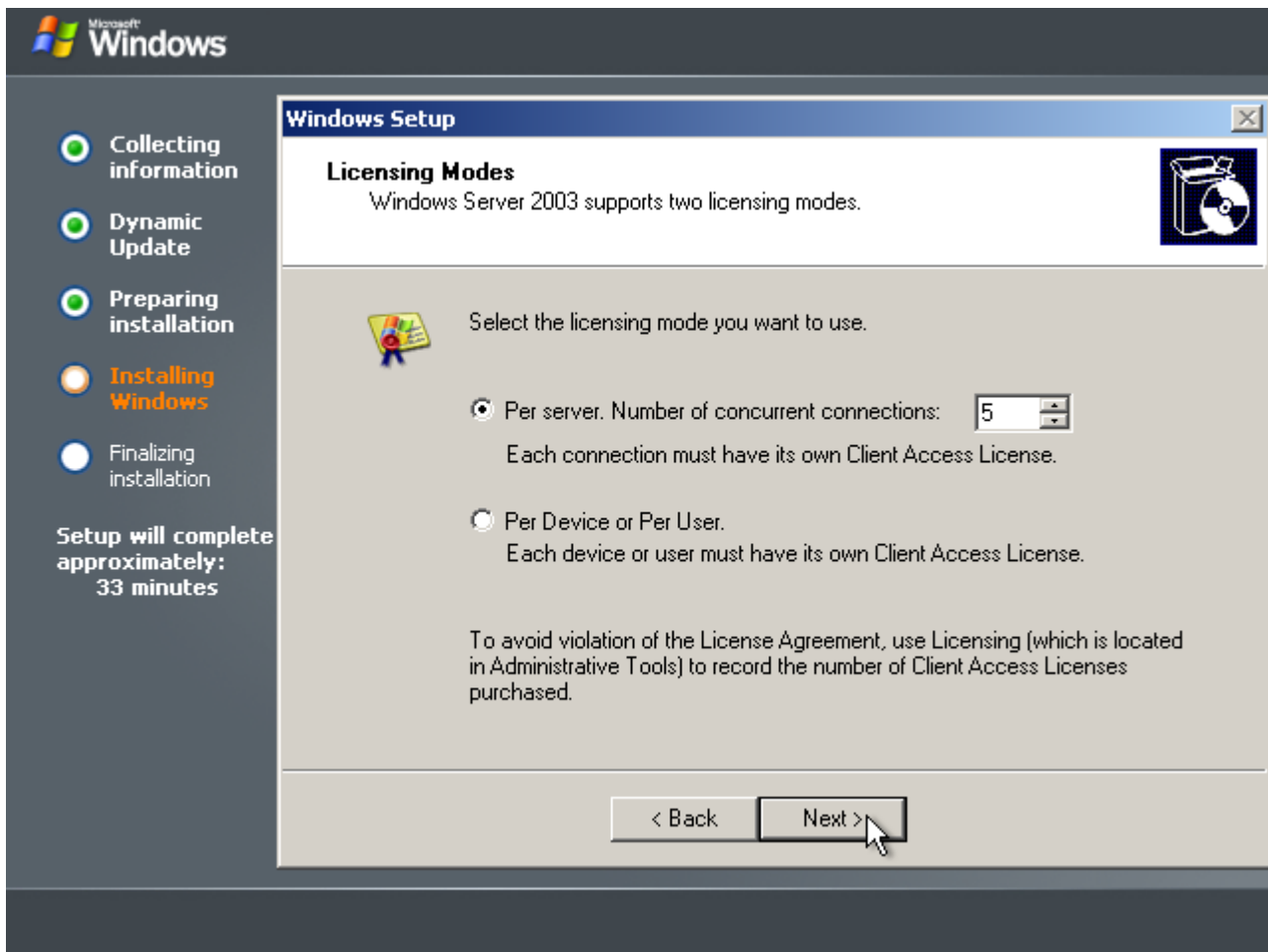


Preencha as informações e clique em "Next".

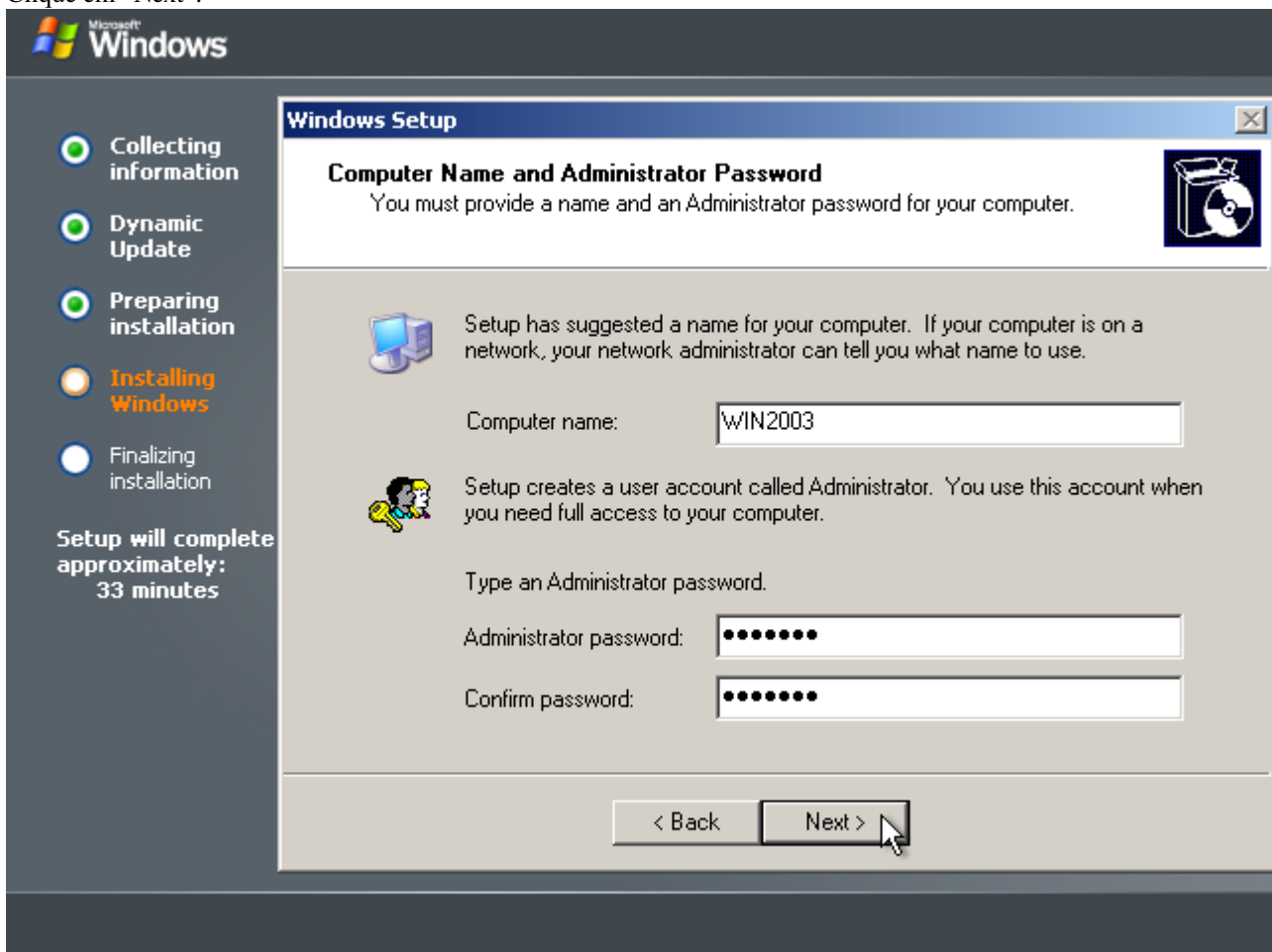


Preencha a chave do produto (ou deixe-a em branco) e clique em "Next". No segundo caso, você terá 14 dias para digitar a chave.

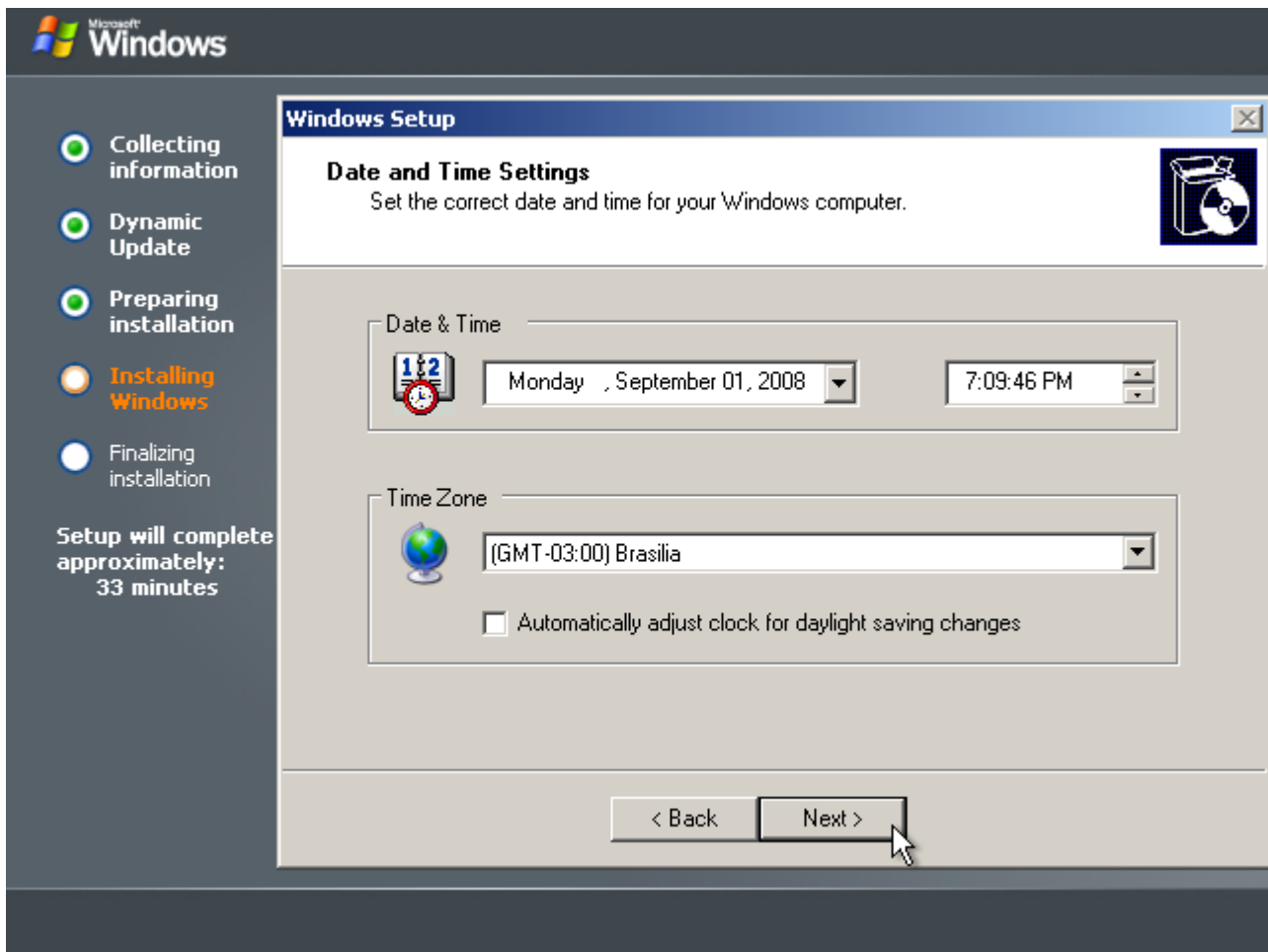
Nota: A chave exibida é fictícia.



Clique em "Next".

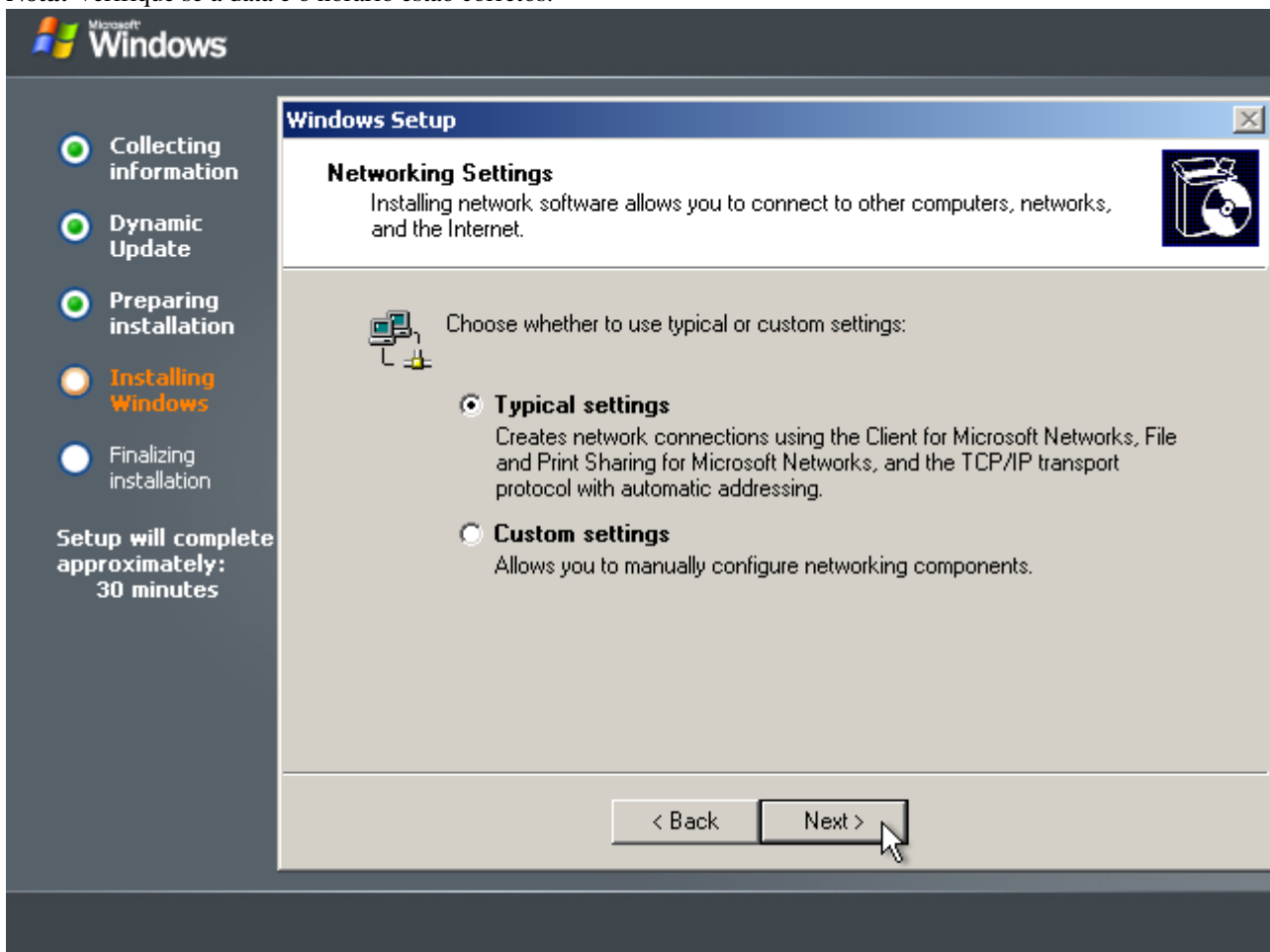


Preencha o nome do servidor e a senha (duas vezes) do usuário "Administrator" e clique em "Next".

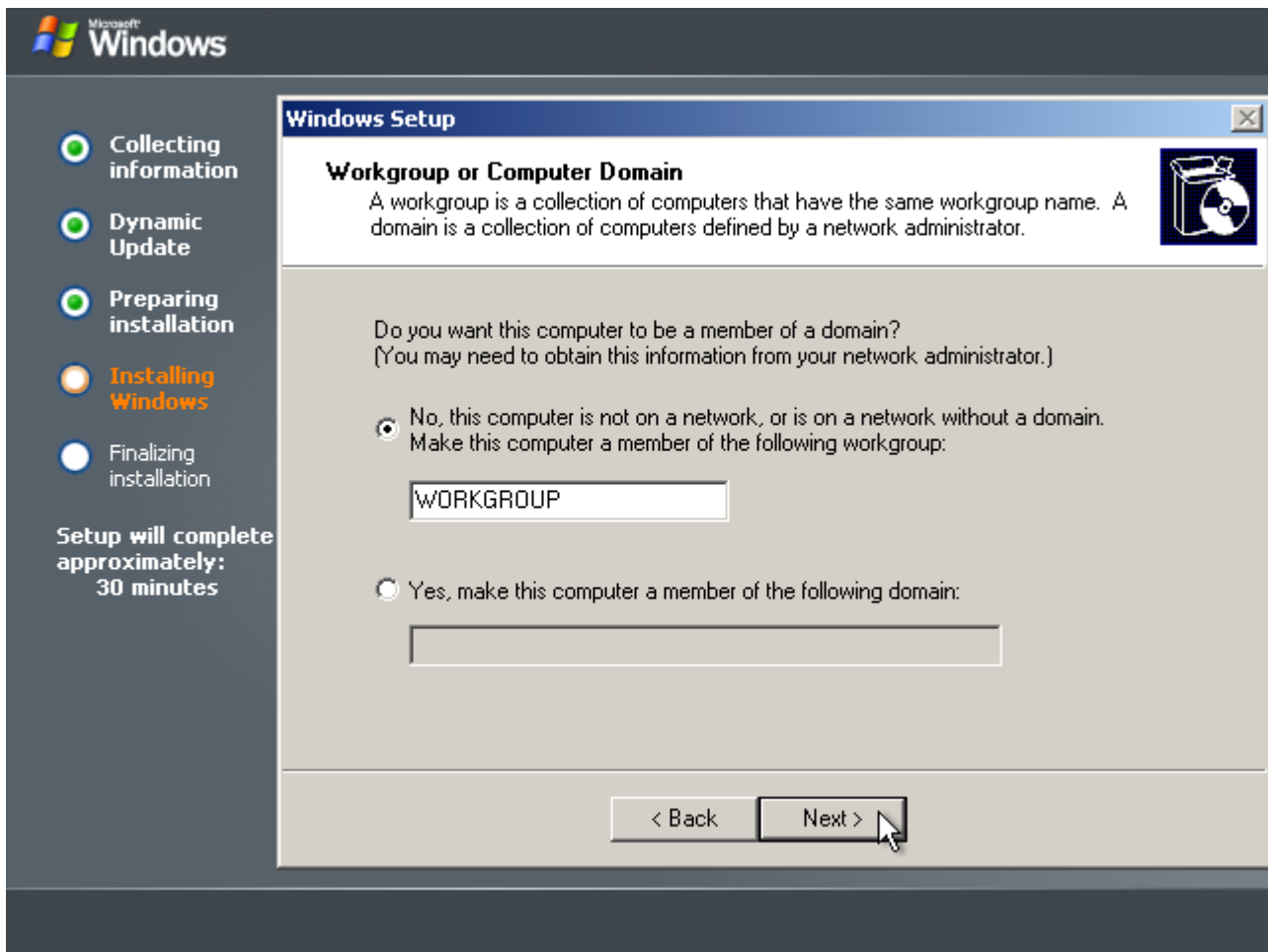


Selecione o fuso horário de Brasília, desmarque o ajuste automático de horário de verão e clique em “Next”.

Nota: Verifique se a data e o horário estão corretos.



Clique em “Next”.



Preencha o nome de um grupo do qual o servidor fará parte e clique em "Next".



Aguarde enquanto o sistema é instalado. Após isso, o computador reiniciará automaticamente.



Copyright © Microsoft Corporation

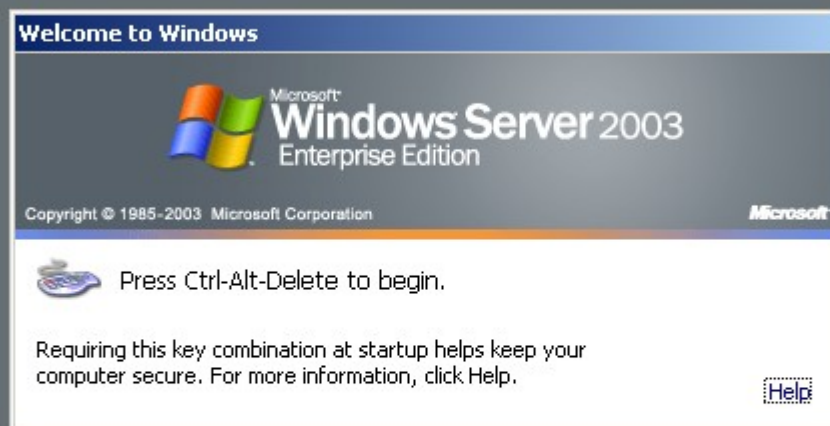
Microsoft

Tela de *boot* exibida na terceira parte do processo de instalação. Nesse ponto, o CD de instalação pode ser retirado.



Windows Server 2003, Enterprise Edition
Evaluation copy. Build 3790 (Service Pack 2)

Continuação do *boot* do sistema.



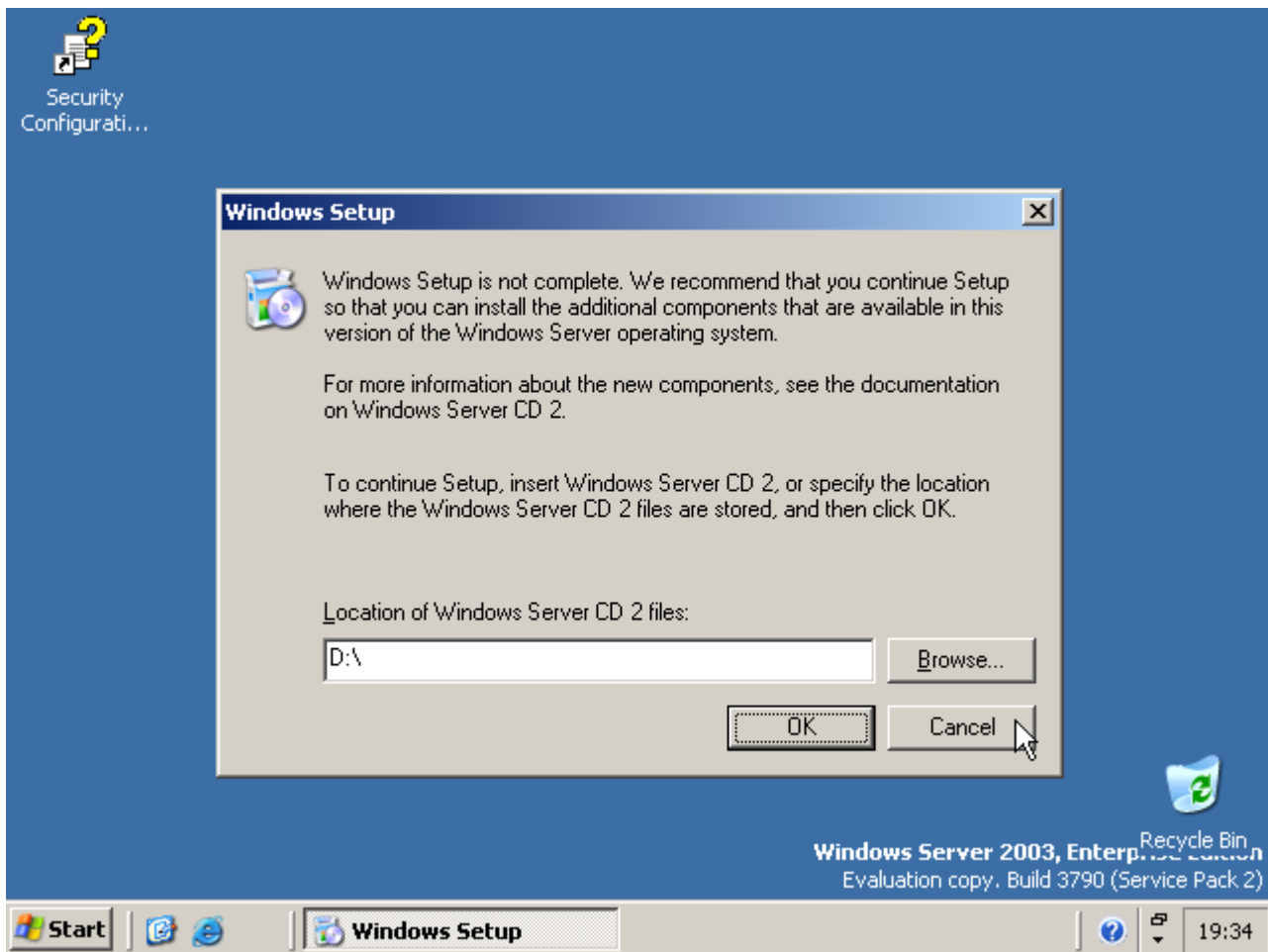
Windows Server 2003, Enterprise Edition
Evaluation copy, Build 3790 (Service Pack 2)

Tela inicial do sistema. Pressione Ctrl+Alt+Del para exibir a tela de *logon*.



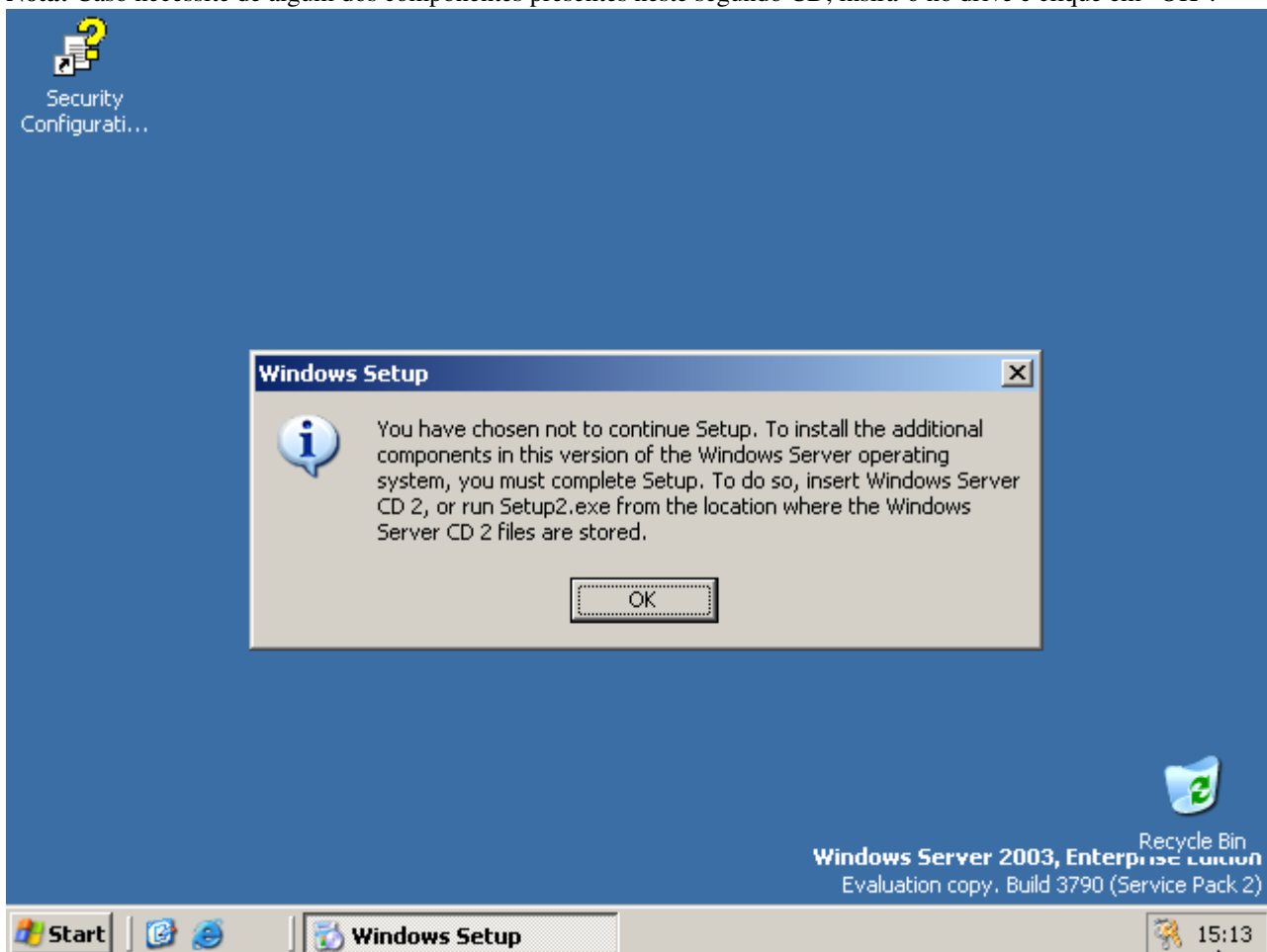
Windows Server 2003, Enterprise Edition
Evaluation copy, Build 3790 (Service Pack 2)

Preencha o nome do usuário e a senha e clique em “OK” ou pressione “Enter”.



Será solicitado o segundo CD de instalação do Windows, desnecessário na maioria dos casos. Clique em “Cancel”.

Nota: Caso necessite de algum dos componentes presentes neste segundo CD, insira-o no drive e clique em “OK”.



Mensagem de aviso sobre a não utilização do segundo CD de instalação.

Windows Server Post-Setup Security Updates



To protect your server, all inbound connections, other than those specifically opened during setup or by policy settings, were blocked. You should now immediately complete the following steps.

Step 1: Install Critical Security Updates

[More Information](#)

Microsoft is continually updating Windows to help protect your server from viruses and other security threats as they are discovered. While this server is protected, you should download and install all of the latest security updates from Windows Update.

Some updates require that Windows be restarted. If Windows is restarted during the update process, you should return to Windows Update to ensure that all critical updates have been installed before continuing with these steps.

[Update this server](#)

Step 2: Configure Automatic Updates

[More Information](#)

The Automatic Updates feature can automatically download the latest security updates on a schedule you specify. Now that this server has been updated, you can help ensure that it stays up-to-date by configuring Automatic Updates.

[Configure automatic updating for this server](#)

To close this page and allow inbound connections to this server, click Finish. For more information about blocking incoming connections, see the [Security Configuration Wizard Help](#).

Finish

Enterprise Edition
Service Pack 2



Tela de configurações iniciais de segurança. Clique em "Finish".

Windows Server Post-Setup Security Updates



To protect your server, all inbound connections, other than those specifically opened during setup or by policy settings, were blocked. You should now immediately complete the following steps.

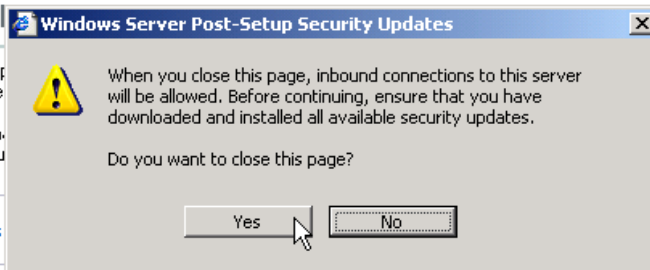
Step 1: Install Critical Security Updates

[More Information](#)

Microsoft is continually updating Windows to help protect your server from viruses and other security threats as they are discovered. While this server is protected, you should download and install all of the latest security updates from Windows Update.

Some updates require that Windows be restarted. If Windows is restarted during the update process, you should return to Windows Update to ensure that all critical updates have been installed before continuing with these steps.

[Update this server](#)



Step 2: Configure Automatic Updates

[More Information](#)

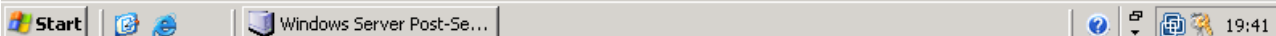
The Automatic Updates feature can automatically download the latest security updates on a schedule you specify. Now that this server has been updated, you can help ensure that it stays up-to-date by configuring Automatic Updates.

[Configure automatic updating for this server](#)

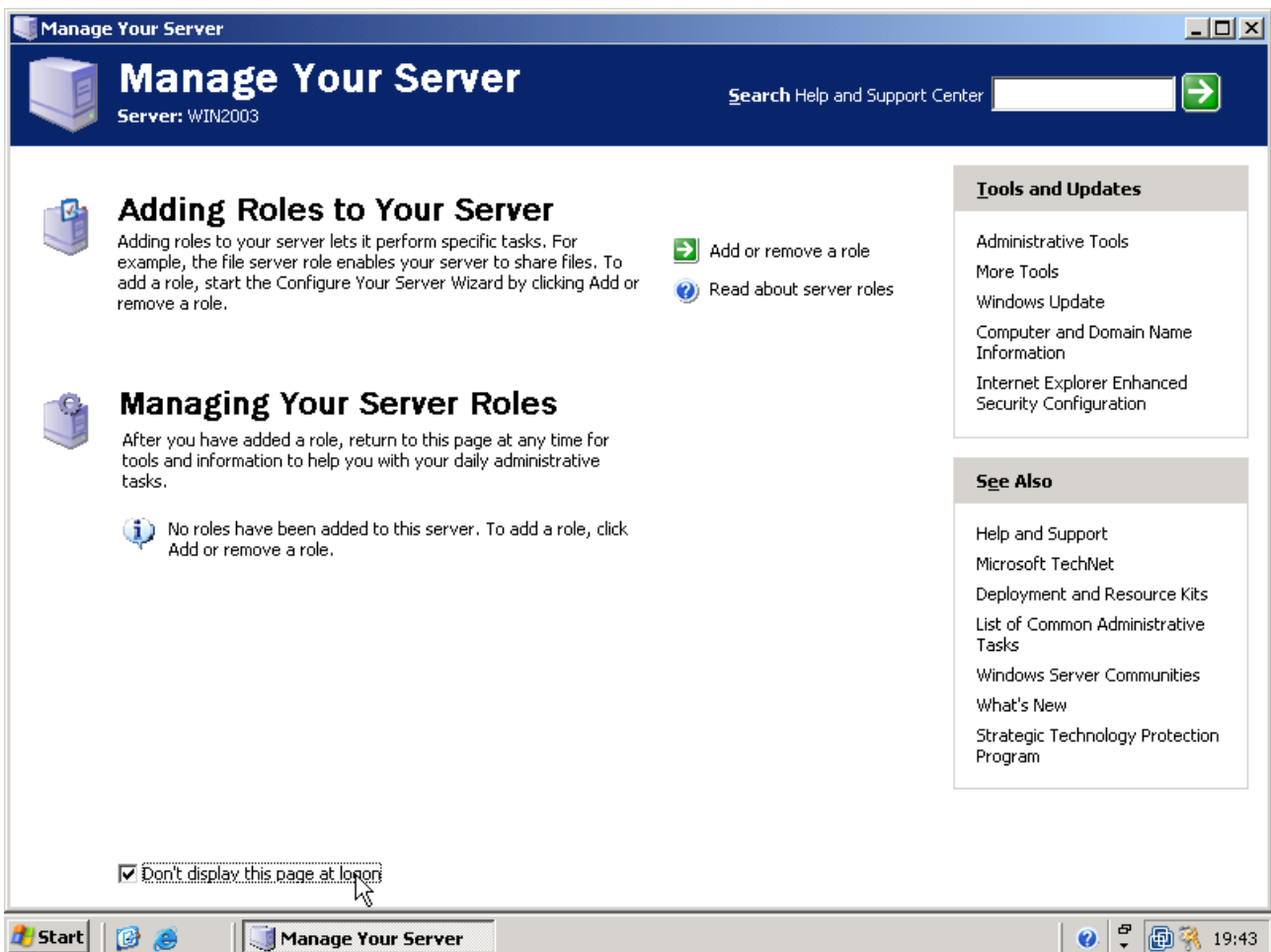
To close this page and allow inbound connections to this server, click Finish. For more information about blocking incoming connections, see the [Security Configuration Wizard Help](#).

Finish

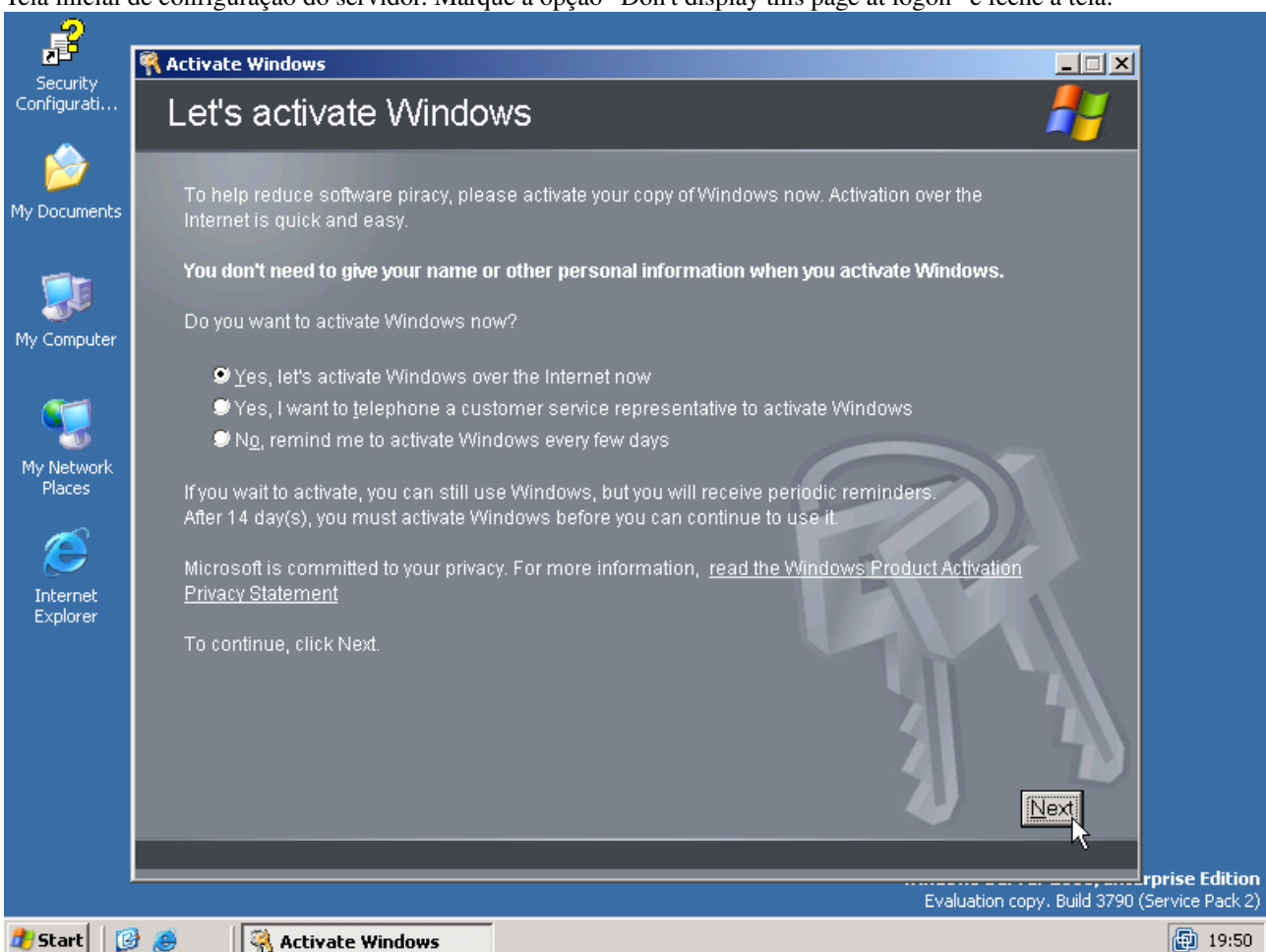
Enterprise Edition
Service Pack 2



Mensagem avisando que todo o tráfego destinado a esse servidor será permitido e que é importante instalar as atualizações de segurança. Clique em "Yes".



Tela inicial de configuração do servidor. Marque a opção “Don't display this page at logon” e feche a tela.

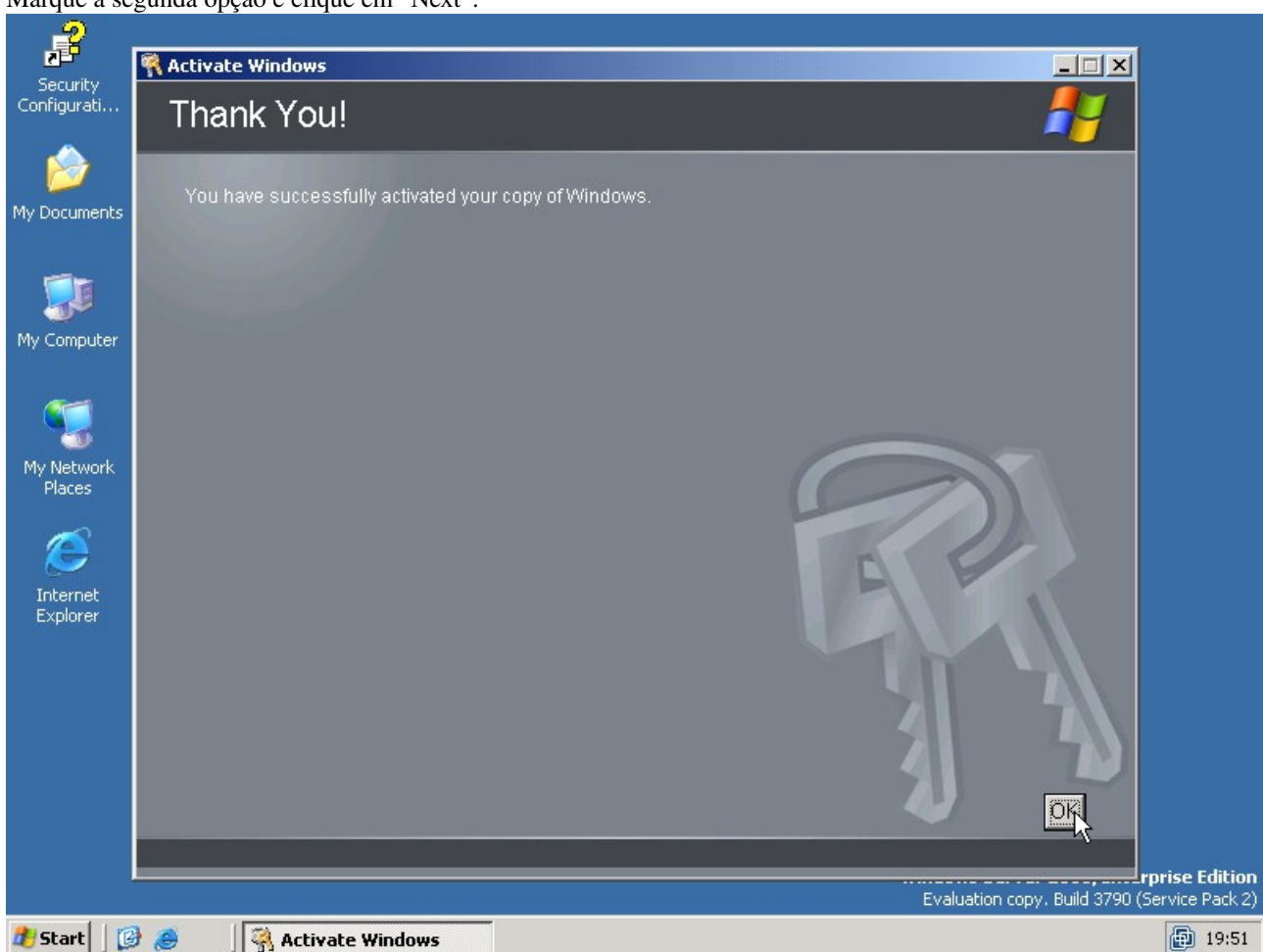


Tela inicial do processo de ativação da chave do produto. Marque a primeira opção e clique em “Next”.

Nota: É necessário ter acesso à Internet para concluir esse procedimento.



Marque a segunda opção e clique em “Next”.



Mensagem informando que a chave foi ativada. Clique em “OK”.

A partir deste momento seu servidor está pronto para uso. Para mais configurações, consulte a documentação.